



完全自動運転がもたらす 社会変革と新産業創出

Shinpei Kato

*Associate Professor, The University of Tokyo
Founder, Tier IV, Inc.*

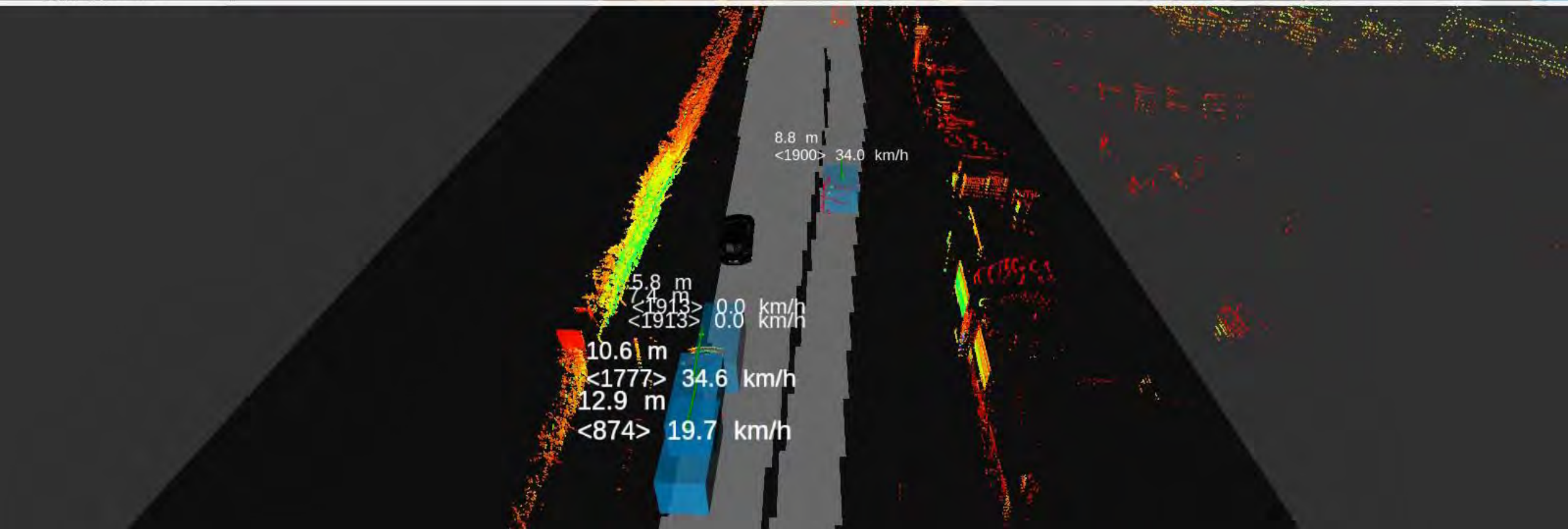




<1900>

34.0

K



8.8 m
<1900> 34.0 km/h

5.8 m
7.4 m
<1913> 0.0 km/h
<1913> 0.0 km/h

10.6 m
<1777> 34.6 km/h
12.9 m
<874> 19.7 km/h