

Assessment of the Current State of Economy and Analysis of Economic and Fiscal Policies

Director General for Economic Assessment and Policy Analysis

Overall Assessment of the State of Japanese Economy

Monthly Economic Report

This is a monthly report to show the government's assessment of the state of the economies by analyzing the trends of Japanese and overseas economies.

This report is announced in "Ministerial Conference on Monthly Economic Report" which Ministers, including the Prime Minister, attend.



Ministerial Conference on Monthly Economic Report

Assessment of the Current State of Japanese Economy on "Monthly Economic Report"

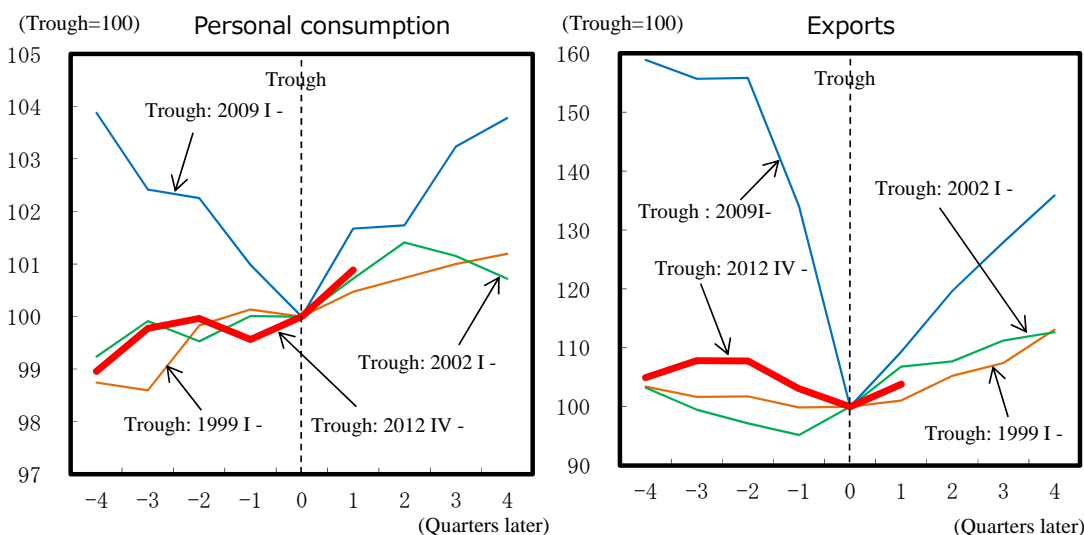
	Assessment of the Current State	Direction of Change
2013 January	While the Japanese economy shows weakness recently, signs of bottoming out can be seen in some areas.	↑
February	The Japanese economy is bottoming out, while weakness can be seen in some areas.	↑
March	The Japanese economy is showing movements of picking up recently, while weakness can be seen in some areas.	↑
April	The Japanese economy is showing movements of picking up recently, while weakness can be seen in some areas.	→
May	The Japanese economy is picking up slowly.	↑
June	The Japanese economy is picking up steadily.	↑
July	The Japanese economy is picking up steadily and shows some movements on the way to recovery.	↑
August	The Japanese economy is picking up steadily and shows some movements on the way to recovery.	→
September	The Japanese economy is on the way to recovery at a moderate pace.	↑
October	The Japanese economy is on the way to recovery at a moderate pace.	→
November	The Japanese economy is on the way to recovery at a moderate pace.	→
December	The Japanese economy is on the way to recovery at a moderate pace.	→
2014 January	The Japanese economy is recovering at a moderate pace.	↑
February	The Japanese economy is recovering at a moderate pace.	→
March	The Japanese economy is recovering at a moderate pace. A last-minute rise in demand before a consumption tax increase is intensifying.	→

Analysis of the Japanese Economy and Public Finance

Annual Report on the Japanese Economy and Public Finance

This is annually published to analyze the overall trend of the economy and public finance of our country. This report is announced in a cabinet meeting.

○Comparison with past recovery phases (Breakdowns of demand)



- The economy has been picking up since early 2013.
- Compared with the past phases of economic recovery, the current turnaround sees stronger personal consumption and weaker exports.

Analysis of Japanese Regional Economies

Economy Watchers Survey

This is the monthly survey that aggregates the business conditions revealed by the "Economy Watchers," who are expected to be sensitive to business cycles, such as department store clerks, supermarket clerks, taxi drivers, etc.

Regional Economy Trend

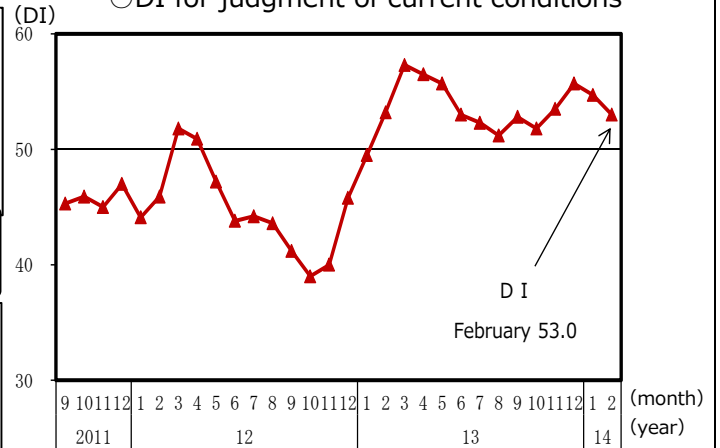
This is published quarterly to analyze 11 areas of Japanese regions.

Annual Regional Economy Report

This is published annually to analyze the overall trend of Japanese regional economies.

Economy Watchers Survey (February, 2014)

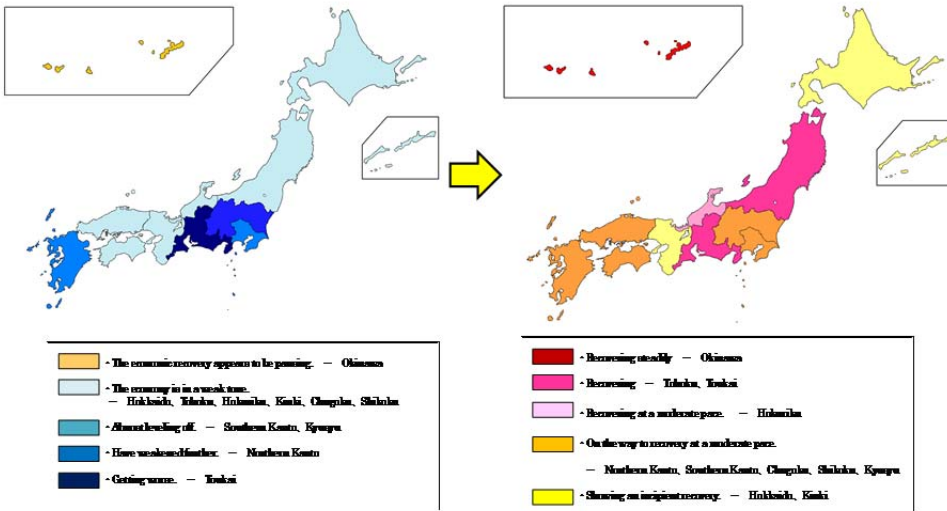
○DI for judgment of current conditions



Regional Economy Trend

2012 November

2014 February



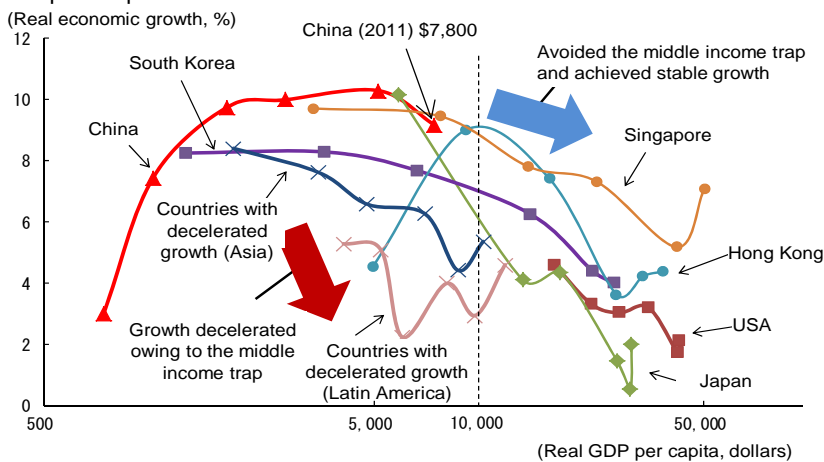
- Analyzing the business conditions of 11 blocks.
- Comparing February 2014 to November 2012, the business conditions have significantly improved in all regions.

Analysis of Overseas Economies

World Economic Trends

This report is published twice a year, to analyze overseas economic trends and economic policies.

○GDP per Capita and Growth Rate



World Economic Trends

The 2013 Autumn Report
— Challenges Towards Stable Growth for China —

Although China has maintained high economic growth, there are concerns that China will fall into the middle income trap.

For details → <http://www5.cao.go.jp/keizai/index-e.html>